

HWS - ceramic - mechanical seal

the universal connector
for stirrers in glass,
metal and
with coatings

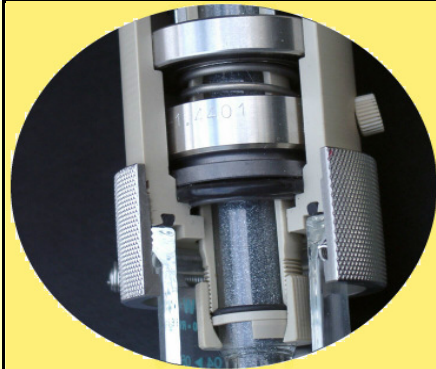


H ▶ W ▶ S ▶ ceramic mechanical seal

The HWS stirrer guide with ceramic mechanical seal and encapsulated ball bearing in stainless steel guarantees trouble free and safe working, under difficult

application conditions by:

- ☒ high gas tightness
- ☒ no abrasive effect on the sealing
- ☒ no lubrication needs at low speed *
- ☒ high chemical and thermal resistance by utilisation of high-quality materials like:
 - body in PEEK
 - seal ring in ceramic and graphite
 - adaptor in borosilicate glass
 - seals in viton (optional Perfluor)
 - inner sleeve in PEEK (optional Hastelloy)
- ☒ smooth and low friction rotation over a wide speed range
- ☒ long operational efficiency without service
- ☒ available for shafts-Ø 8, 10, 14 and 16 mm



the threepart shaft seal avoids leaks but the stirrer is furthermore height adjustable without any problems

- ☒ the usage of stirrers in different materials by a co-rotation inner sleeve

- ☒ modular configuration adequate glass parts for all connections (conical joints, flat-flange, screw threads etc.)

- ☒ max. rotation speed 800 r/min*
- ☒ max. insert temperature 200°C

*until 200 r/min insertable even without grease

as a result of its construction the HWS ceramic mechanical seal is applicable for various stirrer materials like (glass, stainless-steel, hastelloy, etc.)

its particular advantage is in combination with coated stirrers (PFA,PTFE, etc.) because the static seal prevents damage to the shaft during operation. It is available in following versions:

**code letter
standard, seals in Viton -
primary seals in Perfluor P
all seals in Perfluor P/P

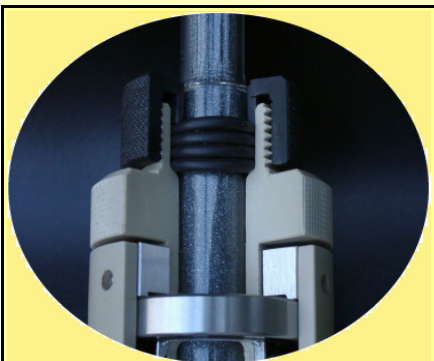
P/P =PFA-compatible (even with certificate)

optional accomplishment

- inner sleeve in stainless steel 1.4571
- body in PPS or stainless steel
- body in PTFE / graphite electro conductive
- with hose clip for nitrogen overlay
- with direct connected stirrer motor
- with stainless steel flange for connection on cover in stainless steel

shaft		**add on for	
Ø	adapter	oref.-Nr.	execution
10	-	3 792 000	P P/P
10	NS 29/32	3 792 129	P P/P
10	NS 45/40	3 792 145	P P/P
10	DN 15	3 792 315	P P/P
10	DN 25	3 792 325	P P/P
16	-	3 792 001	P P/P
16	NS 29/32	3 792 629	P P/P
16	NS 45/40	3 792 645	P P/P
16	DN 25	3 792 725	P P/P
16	DN 40	3 792 740	P P/P
16	DN 50	3 792 750	P P/P

other format on request



The shaft is connected with the inside hull with clampings in viton. Especially for PTFE-stirrers we offer an optional tong.



high class technology-good value